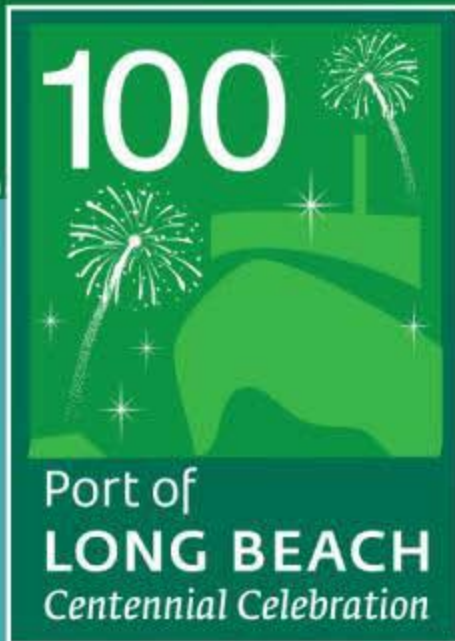


Los Angeles Area Chamber of Commerce

2011 World Trade Week Congressional Briefing



Samara Ashley, Director of Government Affairs

Thursday, March 17, 2011

The Port of Long Beach

100
Centennial
Celebration

Port of
LONG BEACH
The Green Port

America's 2nd busiest container port

Combined with LA, comprise the 5th largest complex in the world

Leading gateway for U.S. – Asia trade

\$120 billion in trade annually

316,000 regional jobs and 1.4 million jobs nationally

Top Trading Partners

100
Centennial
Celebration

Port of
LONG BEACH
The Green Port

China
Japan
Taiwan
Thailand
South Korea



Top Commodities

100
Centennial
Celebration



Port of
LONG BEACH
The Green Port

Imports

Furniture

Apparel

Electronic products

Toys

Computer equipment

Exports

Wastepaper

Scrap metal

Fabric (including cotton)

Synthetic resins

Animal feed

On the Rebound

100
Centennial
Celebration



6.3 million twenty-foot equivalent units in 2010
Container cargo volume up nearly 25 percent over 2009

Why the San Pedro Bay Ports?

100
Centennial
Celebration



Large consumer population

Highway System, Rail Connectors, Distribution Centers

Key Rail Connections

100
Centennial
Celebration



Green Port Policy

100
Centennial
Celebration



Protect the community from negative
Port impacts

Distinguish the Port of Long Beach as
a global environmental leader

Promote sustainability

Employ best available technologies

Engage and educate the community



Clean Air Action Plan

100
Centennial
Celebration



Adopted groundbreaking Plan in 2006
to reduce air pollution 45% by 2012

CAAP Update adopted in 2010 to
further reduce emissions

Strategies for cleaner ships, trucks,
trains, tugs, cargo-handling
equipment

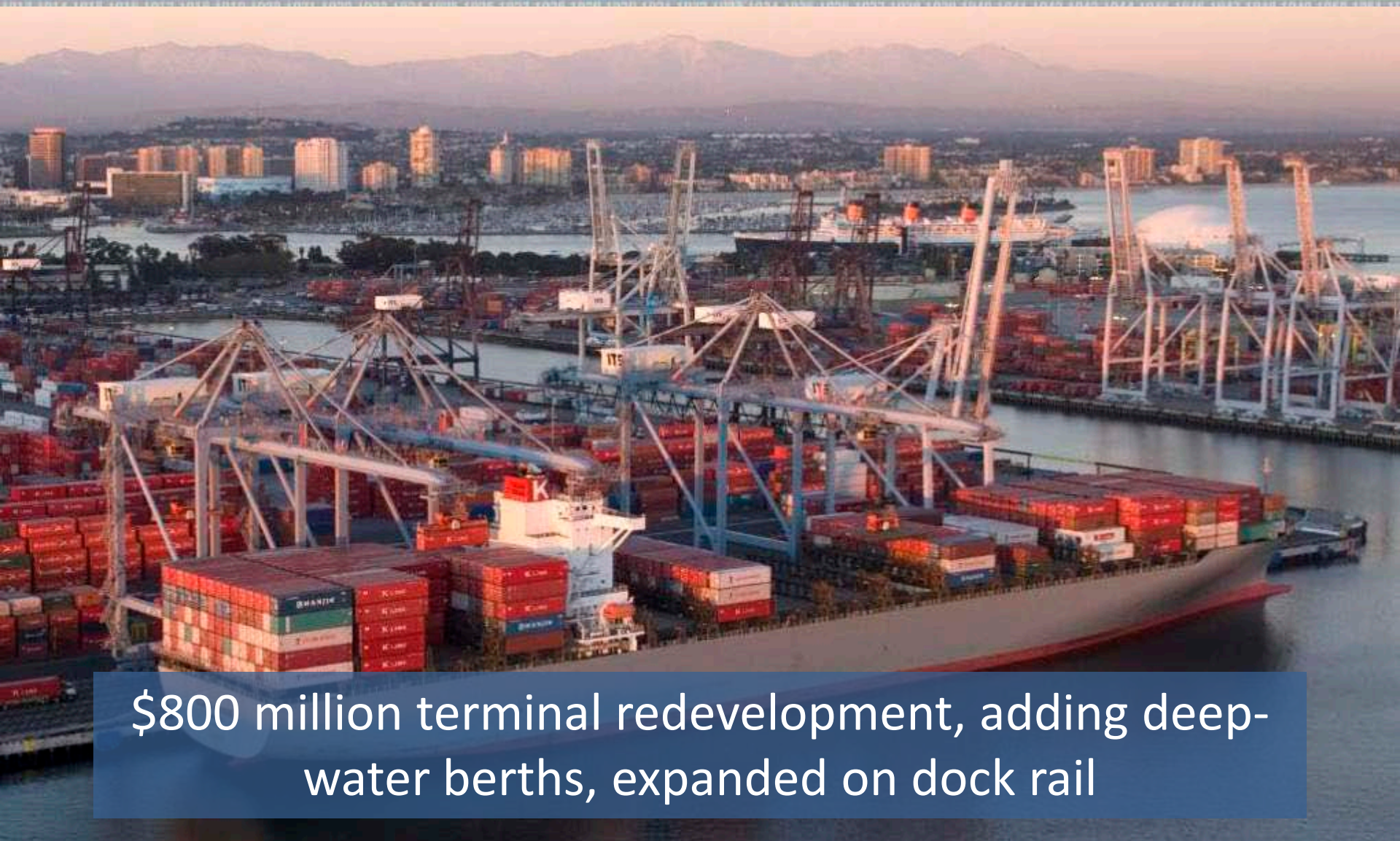
Technology advancement program

Investing in Infrastructure

100
Centennial
Celebration



Port of
LONG BEACH
The Green Port



\$800 million terminal redevelopment, adding deep-water berths, expanded on dock rail

Gerald Desmond Bridge

100
Centennial
Celebration



Port of
LONG BEACH
The Green Port



\$950 million bridge replacement will ease congestion and improve traffic safety



SR47 Expressway/Heim Bridge (\$535 m)

I-710 EIR (\$30 m)

I-710 Corridor (\$5.4 b)

Colton Crossing (\$150 m)

Alameda Corridor East (\$2.5 b)

Local mainline rail improvements (\$3.4 b)

Various grade separations

Advance Transportation Management System (ATMIS)

Zero Emissions Container Mover System

Remaining Competitive

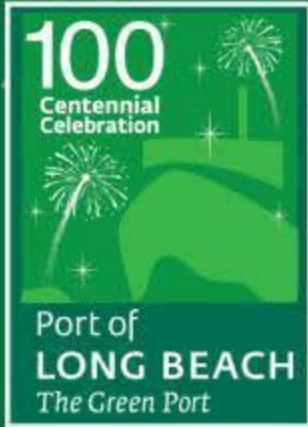
100
Centennial
Celebration



Invest in critical infrastructure projects

Develop a National Freight Policy with funds dedicated to goods movement projects (e.g. funding by formula)

Support the National Export Initiative and other measures that will increase exports and create jobs



100

THANK YOU

