

Tehachapi Renewable Transmission Project (TRTP)



February 2009

Why We Are Here Today

- Provide background on SCE's commitment to renewable energy
- Discuss the operational and economic importance of the Tehachapi Renewable Transmission Project (TRTP)
- Describe how the project route and alternatives will affect the environment and the economy of the region
- Seek your support on this vital electric infrastructure improvement project



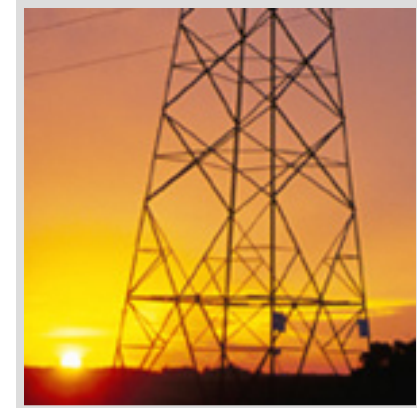
Renewable Energy Leader

- SCE has the largest renewable portfolio in U.S.
 - Almost 16% of energy provided by SCE comes from renewable energy sources including wind, solar, biomass, geothermal and small hydro
 - SCE's renewable portfolio mix currently represents 1/6 of all renewable energy delivered in the United States; SCE buys 92% of all solar power in U.S.
 - SCE is required by State law and Governor's Executive Order to reach a goal of 33% by 2030 of energy delivered from renewable, clean sources.
- SCE meeting State goals/requirements:
 - TRTP – 4,500 MW of wind power
 - SCE Solar Rooftop Program – 250MW of solar power from commercial property rooftop projects
 - Other wind, solar and clean energy projects
 - SCE can meet State renewable goals only by building and upgrading its transmission system



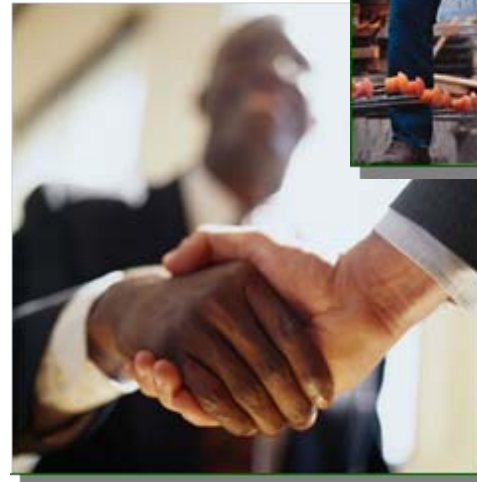
Transmission & Distribution System Investment

- Meeting the challenges of growing demand for reliable power from a growing region
 - SCE expects to add 45,000 - 50,000 new customers each year as Southern California region continues to grow
 - Increased use of electricity from large screen TVs, more computers, and other household electrical devices, along with business and technology growth
 - SCE plans to invest about \$20 billion in system upgrades and improvements over next decade to meet growth, including:
 - Transmission and distribution facilities
 - Substations
 - New peaker power facilities
 - Other needed upgrades and improvements



Benefits to the Southern California Region

- Upgrading and improving SCE's electric infrastructure will benefit the region by:
 - Providing clean, renewable energy that will help reduce greenhouse gases and improve the environment
 - Improving reliability of electric service delivery to SCE's customers
 - Providing new jobs and local economic stimulus from electric system projects
 - Increasing tax revenue to local governments from new and upgraded electric facilities



Tehachapi Renewable Transmission Project

- Will deliver 4,500 MW of predominantly new wind energy to customers
- Over 250 miles of high voltage transmission lines (500kV) will be constructed, primarily through upgrades of existing facilities on existing right of way
- Will maximize the use of existing SCE right of way to minimize the need for new right of way and related community and environmental impacts
- Will connect single largest source of wind energy in the United States
- Will help to meet California renewable energy goals and requirements
- Total investment: \$2.1 billion

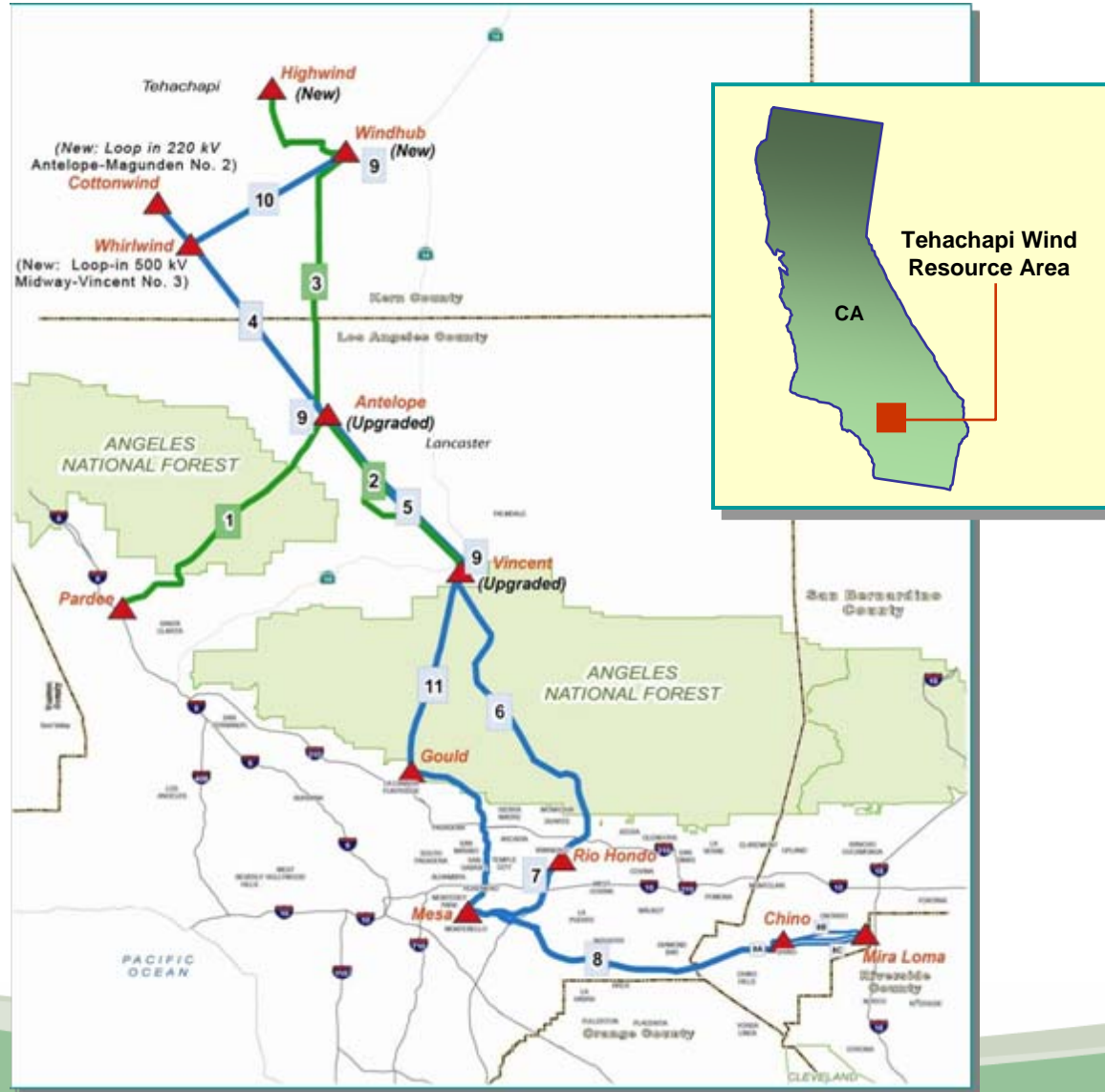


Without the Tehachapi Renewable Transmission Project

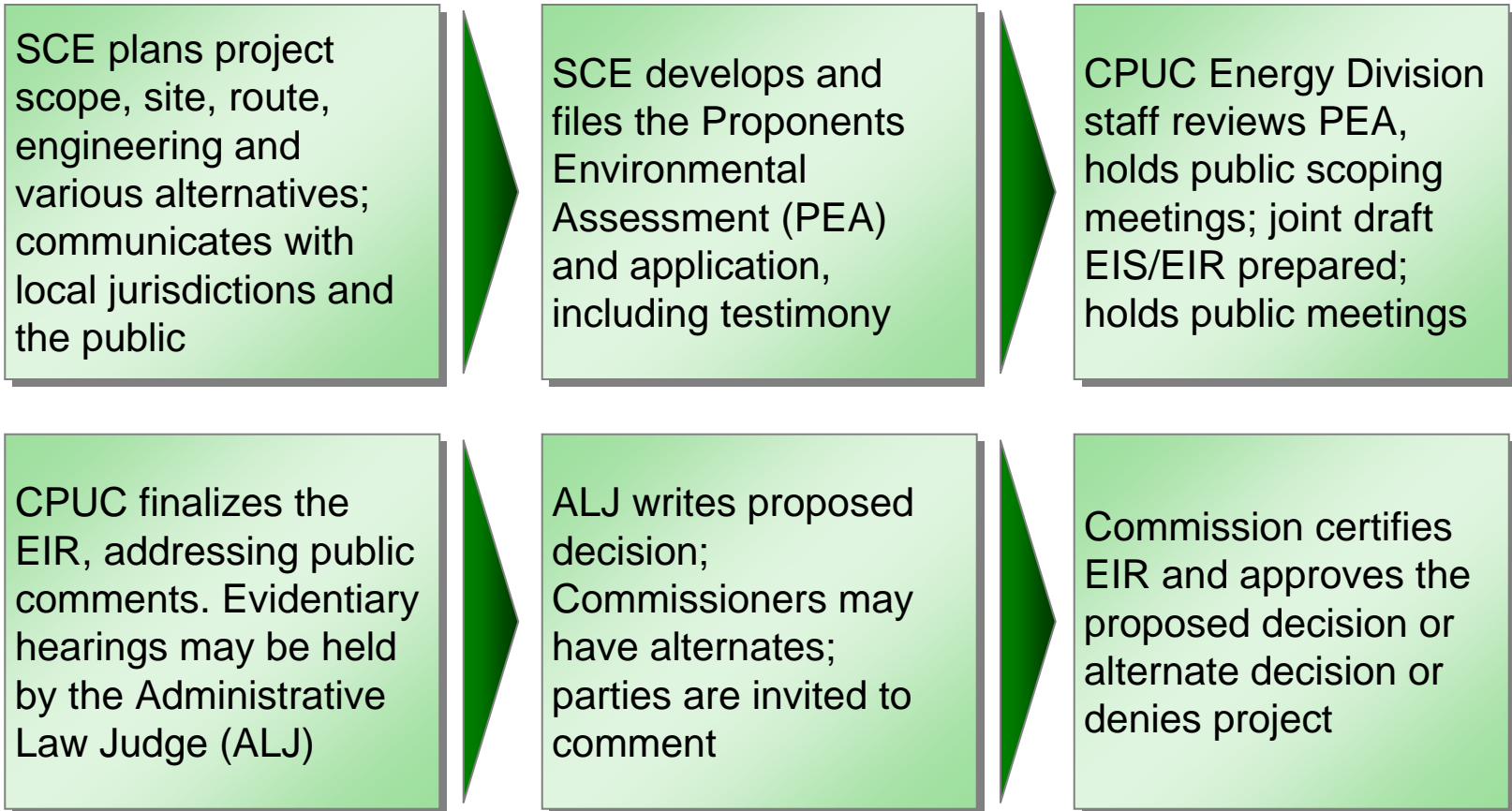
- Unable to distribute 4,500 MW of predominantly new wind generation to Californians
- No off-set of greenhouse gas emissions
- Unable to meet California's renewable energy goals
- Lack of new transmission upgrades and increasing power demand could lead to reduced reliability in delivering electric service



Tehachapi Renewable Transmission Project



CPUC Application Process for CPCN



TRTP Milestones

- 2006-2007: SCE held numerous proactive public forums; conducted briefings to provide information about TRTP; and heard from residents, businesses, elected officials and organizations
- June 2007: SCE filed Environmental Assessment and Project Application with the CPUC
- 2007-2008: CPUC and U.S. Forest Service held public scoping meetings on project application
- 2009: CPUC and U.S. Forest Service issued the Draft EIR/EIS on February 12, 2009; public meetings are scheduled for mid March 2009
 - Draft EIR/EIS finds that using existing right-of-way, SCE's preferred route, creates less disruption to the environment and less cost to ratepayers as new right-of-way does not have to be acquired.

Since Filing TRTP Application

- SCE has responded to hundreds of comments and questions from individuals and organizations about the TRTP Project.
 - Clarification of Proponents Environmental Assessment (PEA) technical information
 - Mapping of dismissed alternatives
 - Field visits to clarify tower sites
 - Additional environmental reviews and studies
 - Technical responses for possible alternatives
 - Mapping and evaluation of forest access roads
 - Information about structure type options
 - Updated biological data following fires
 - Preliminary engineering for publicly offered alternatives

Steps Taken to Address Environmental Issues

- Additional steps taken to ensure project environmental compliance and compatibility
 - Identify sensitive and unique environmental resources
 - Where feasible, avoid sensitive environmental resources
 - If environmental resources cannot be avoided, minimize the impacts
 - Mitigate significant effects to the environment
 - Approved project will include extensive environmental mitigation measures



TRTP Design Objectives

- SCE operating and design objectives for TRTP:
 - Maximize use of existing, long-operating SCE right-of-way
 - Minimize impacts on environment and other communities due to new right-of-way
 - Avoid additional rate impacts on customers and regional economy if new right-of-way has to be purchased
 - Avoid potential major environmental impacts on public lands



TRTP and Next Steps

- SCE appreciates the public's interest in TRTP, need for renewable energy and importance of minimizing environmental and economic impacts
- CPUC and U.S. Forest Service issued the Draft EIR/EIS on February 12, 2009
- Public workshops are scheduled for:
 - March 18 – Palmdale
 - March 19 – Chino Hills (en banc with CPUC Commissioners)
 - March 24 – Pasadena
- For further information, please visit: www.sce.com/tehachapi
- CPUC website: www.cpuc.ca.gov

